

INFORME MENSUAL SOBRE LAS ESPECIFICACIONES DEL GAS NATURAL

(Valores promedio diarios)



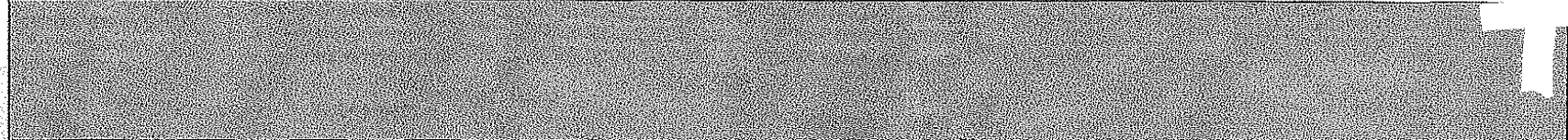
PERMISIONARIO:	Gasoducto del Río
PUNTO DE MEDICIÓN:	Estación Brasil
ZONA DE MEDICIÓN:	RESTO DEL PAÍS

FECHA (dd/mm/aa)	Metano (% vol)	Óxido de Carbono (% vol)	Nitrógeno (% vol)	Total Inertes (% vol)	Etano (% vol)	Temperatura de Rocío (K)	Humedad (mg/m ³)	Poder Calorífico (MJ/m ³)	Índice Wobbe (MJ/m ³)	Ácido Sulfhídrico (mg/m ³)	Azúfre total* (mg/m ³)	Oxígeno* (% vol)
01/10/2012	96.9628	0.5728	0.1939	0.7667	2.0268	237.9848	15.5061	38.2539	50.4945	0.3166		
02/10/2012	96.3441	0.6914	0.2145	0.9059	2.4045	249.1345	19.5101	38.3861	50.4759	0.2402		
03/10/2012	96.5035	0.7700	0.2119	0.9819	2.1965	257.7956	17.3385	38.2829	50.3630	0.4075		
04/10/2012	95.9982	0.8407	0.2258	1.0665	2.4503	251.7550	17.2410	38.4341	50.3927	0.6581		
05/10/2012	96.7612	0.7941	0.1944	0.9885	2.0155	246.4896	31.4217	38.1648	50.2875	0.6737		
06/10/2012	97.0606	0.7193	0.1918	0.9111	1.8379	243.6936	21.5471	38.1109	50.3104	0.8148		
07/10/2012	96.9424	0.7137	0.1985	0.9122	1.9520	239.7617	15.5558	38.1452	50.3308	0.8458		
08/10/2012	96.8319	0.6926	0.2102	0.9027	2.0119	235.9024	13.4488	38.2065	50.3752	0.6716		
09/10/2012	96.8425	0.6864	0.2503	0.9367	1.9767	240.9710	14.3349	38.1784	50.3450	0.6708		
10/10/2012	96.6378	0.7218	0.2153	0.9371	2.1859	246.1672	14.9702	38.2364	50.3692	0.6624		
11/10/2012	96.7876	0.6876	0.2027	0.8903	2.0903	245.4216	16.6884	38.2201	50.3899	0.4196		
12/10/2012	96.6480	0.6710	0.1942	0.8652	2.2714	241.8937	17.5892	38.2671	50.4324	0.3587		
13/10/2012	96.6567	0.6656	0.2011	0.8667	2.2538	240.7413	17.7405	38.2666	50.4327	0.3318		
14/10/2012	96.7853	0.6604	0.1932	0.8535	2.1547	239.3245	17.8691	38.2319	50.4205	0.4351		
15/10/2012	96.7939	0.6306	0.1991	0.8297	2.1707	239.3904	17.9631	38.2460	50.4468	0.4479		
16/10/2012	96.6925	0.6400	0.1870	0.8271	2.2855	238.5776	18.3922	38.2703	50.4599	0.5144		
17/10/2012	96.6399	0.6641	0.1860	0.8500	2.2941	238.3426	17.7027	38.2764	50.4466	0.4830		
18/10/2012	96.7055	0.6788	0.1846	0.8634	2.1879	241.0699	18.3572	38.2625	50.4287	0.6352		
19/10/2012	96.9141	0.7044	0.1895	0.8939	2.0292	237.9303	19.5710	38.1511	50.3446	0.8510		
20/10/2012	96.9362	0.7252	0.1934	0.9186	1.9762	238.9304	17.8950	38.1313	50.3172	0.8799		
21/10/2012	97.0048	0.6927	0.1824	0.8751	1.9513	239.2994	17.5434	38.1412	50.3512	0.7374		
22/10/2012	96.9573	0.6042	0.1868	0.7910	2.0431	240.0087	18.3330	38.2259	50.4595	0.6889		
23/10/2012	96.5355	0.6560	0.1861	0.8422	2.3846	242.1721	17.8061	38.3222	50.4782	0.6549		
24/10/2012	96.7582	0.6394	0.1993	0.8387	2.1868	239.9221	17.7227	38.2523	50.4419	0.6271		
25/10/2012	96.7582	0.6394	0.1993	0.8387	2.1868	239.9221	17.7227	38.2523	50.4419	0.6271		
26/10/2012	96.7220	0.6106	0.1807	0.7914	2.2411	237.7838	17.4190	38.3018	50.5011	0.5506		
27/10/2012	95.7941	0.6414	0.1888	0.8302	2.8289	241.9913	16.3087	38.6961	50.6974	0.0133		
28/10/2012	97.0971	0.5392	0.1804	0.7196	1.9538	240.9859	13.2997	38.2458	50.5196	0.0178		
29/10/2012	97.3916	0.6076	0.1729	0.7805	1.7045	227.0962	12.8122	38.0709	50.3758	0.0153		
30/10/2012	97.2772	0.5614	0.1819	0.7433	1.8128	229.5299	13.6339	38.1488	50.4468	0.0142		
31/10/2012	97.5106	0.5307	0.1805	0.7113	1.6173	236.5686	13.6112	38.0989	50.4425	0.0171		

*/ Los valores trimestrales se deberán reportar en los meses de enero, abril, julio y octubre de cada año, respecto del trimestre inmediato anterior.

Mínimo	95.7941	0.5307	0.1729	0.7113	1.6173	227.0962	12.8122	38.0709	50.2875	0.0133		
Promedio	96.7823	0.6662	0.1960	0.8622	2.1188	240.8567	17.3179	38.2412	50.4200	0.4929		
Máximo	97.5106	0.8407	0.2503	1.0665	2.8289	257.7956	31.4217	38.6961	50.6974	0.8799		
Desv. Est.	0.342772115	0.068908202	0.015680248	0.078517995	0.236257174	5.715092041	3.331557685	0.116524589	0.079223084	0.267039097		

Observaciones:



INFORME MENSUAL SOBRE LAS ESPECIFICACIONES DEL GAS NATURAL

(Registros máximos diarios)



PERMISIONARIO: _____ **Gasoducto del Rio**
PUNTO DE MEDICIÓN: _____ **Estación Brasil**
ZONA DE MEDICIÓN: RESTO DEL PAÍS

FECHA (dd/mm/aa)	Metano (% vol)	Bióxido de Carbono (% vol)	Nitrógeno (% vol)	Total Inertes (% vol)	Etano (% vol)	Temperatura de Rocío (K)	Humedad (mg/m ³)	Poder Calorífico (MJ/m ³)	Índice Wobbe (MJ/m ³)	Acido Sulfídrico (mg/m ³)
01/10/2012	97.3697	0.6337	0.2433	0.8655	2.2993	250.0758	22.5190	38.3698	50.5542	0.4192
02/10/2012	96.5762	0.7745	0.2405	0.9941	2.6314	253.0664	25.6140	38.4774	50.5613	0.3219
03/10/2012	96.6757	0.8154	0.2286	1.0393	2.5017	261.2969	28.8307	38.4437	50.4351	0.7186
04/10/2012	96.5363	0.8854	0.2527	1.1114	3.0030	256.7676	23.5901	38.8264	50.6186	3.1291
05/10/2012	97.0709	0.8567	0.2033	1.0542	3.0104	254.9084	44.9838	38.4790	50.4635	0.8085
06/10/2012	97.3016	0.7814	0.2006	0.9745	1.9983	250.7367	35.2815	38.1909	50.3846	0.9732
07/10/2012	97.1268	0.7942	0.2119	0.9808	2.1217	245.7613	19.5231	38.2368	50.3886	1.0705
08/10/2012	97.0432	0.7443	0.2323	0.9478	2.1988	248.9882	20.2053	38.3862	50.4855	0.8684
09/10/2012	97.1371	0.7503	0.5086	1.2059	2.2390	261.9823	16.4594	38.2894	50.5664	0.8609
10/10/2012	96.9746	0.8312	0.2608	1.0382	2.5446	249.7496	22.1815	38.3781	50.4478	0.7935
11/10/2012	96.9535	0.7260	0.2239	0.9449	2.2202	249.6600	24.0565	38.2907	50.4344	0.5465
12/10/2012	96.8029	0.7222	0.2250	0.9219	2.4768	247.6672	20.6984	38.3327	50.4854	0.4641
13/10/2012	96.8760	0.7043	0.2147	0.9140	2.5012	246.6654	25.7453	38.4752	50.5513	0.4716
14/10/2012	96.9844	0.7229	0.2105	0.9049	2.2820	247.1383	25.1633	38.3052	50.4913	0.7037
15/10/2012	97.0336	0.6827	0.2073	0.8845	2.3794	246.2930	23.8484	38.3231	50.4859	0.7486
16/10/2012	96.8835	0.7177	0.1979	0.8969	2.4426	245.4229	23.8546	38.3280	50.5299	0.6513
17/10/2012	96.8692	0.7638	0.1960	0.9428	2.4738	246.7203	22.3130	38.3707	50.5376	0.7785
18/10/2012	96.9807	0.7152	0.2053	0.9098	2.3673	249.3367	21.4821	38.3490	50.4728	0.9956
19/10/2012	97.4948	0.8356	0.2330	1.0067	2.3805	243.8208	34.5297	38.2508	50.4600	1.3175
20/10/2012	97.2605	0.7671	0.2061	0.9664	2.2400	244.9069	25.7197	38.2078	50.3646	1.0854
21/10/2012	97.3382	0.8628	0.1936	1.0332	2.0922	245.5086	21.1798	38.2060	50.4496	1.1828
22/10/2012	97.2347	0.6531	0.2028	0.8415	2.3952	247.5350	24.0225	38.4132	50.5529	0.9956
23/10/2012	96.8816	0.7029	0.2000	0.8925	2.8639	247.0589	26.4590	38.5137	50.5662	0.7935
24/10/2012	97.0521	0.6965	0.2250	0.9215	2.3561	247.3097	22.6144	38.3125	50.5134	0.9732
25/10/2012	97.0521	0.6965	0.2250	0.9215	2.3561	247.3097	22.6144	38.3125	50.5134	0.9732
26/10/2012	96.9279	0.6722	0.1925	0.8636	2.4766	247.3183	23.6716	38.3892	50.5714	0.9208
27/10/2012	96.8211	0.7116	0.2063	0.9062	4.1892	267.6389	20.8930	39.5977	51.1587	0.0524
28/10/2012	97.6245	0.6508	0.1973	0.8454	2.9932	263.1568	17.6755	39.0534	50.8905	0.0299
29/10/2012	97.7400	0.7441	0.2046	0.9145	2.6883	240.6289	18.1348	38.3930	50.5354	0.0599
30/10/2012	98.1465	0.6709	0.1997	0.8409	2.4767	246.5082	119.4982	38.3505	50.5413	0.7186
31/10/2012	97.8298	0.6633	0.2216	0.8452	1.9886	248.5533	21.4524	38.3337	50.5345	0.0299
Máximo	98.1465	0.8854	0.5086	1.2059	4.1892	267.6389	119.4982	39.5977	51.1587	3.1291

Observaciones:

INFORME MENSUAL SOBRE LAS ESPECIFICACIONES DEL GAS NATURAL

(Registros mínimos diarios)



PERMISIONARIO:

Gasoducto del Río

PUNTO DE MEDICIÓN:

Estación Brasil

ZONA DE MEDICIÓN:

RESTO DEL PAÍS

FECHA (dd/mm/aa)	Metano (% vol)	Bóxido de carbono (% vol)	Nitrógeno (% vol)	Total sulfuros (% vol)	Etano (% vol)	Temperatura de Rocio (°C)	Humedad (mg/m ³)	Poder Calorífico (MJ/m ³)	Índice Wobbe (MJ/m ³)	Acido sulfúrico (mg/m ³)
01/10/2012	96.5222	0.5051	0.1684	0.6744	1.7808	219.8505	11.5450	38.1604	50.4417	0.2021
02/10/2012	96.0001	0.6225	0.2030	0.8419	2.2595	243.7485	14.1431	38.3038	50.3821	0.1722
03/10/2012	96.0360	0.7407	0.2015	0.9476	2.0643	252.3108	11.8506	38.2279	50.3245	0.1722
04/10/2012	95.1470	0.7755	0.1901	0.9878	2.1937	243.1901	11.6930	38.2323	50.3027	0.0150
05/10/2012	95.7176	0.7503	0.1879	0.9475	1.7916	240.0968	14.5871	38.0710	50.2340	0.0150
06/10/2012	96.7966	0.6222	0.1794	0.8087	1.6645	233.8168	13.0078	38.0338	50.2552	0.6662
07/10/2012	96.6832	0.6441	0.1755	0.8440	1.7826	231.9219	10.8065	38.0417	50.2218	0.7261
08/10/2012	96.4654	0.6102	0.1903	0.8325	1.8516	228.3287	10.4043	38.1396	50.3041	0.4716
09/10/2012	96.4525	0.6210	0.0083	0.6302	1.8038	232.3532	12.4046	38.0652	50.1528	0.5540
10/10/2012	96.1313	0.6661	0.1856	0.8581	1.9724	240.5030	11.6061	38.1580	50.2623	0.5465
11/10/2012	96.5738	0.6615	0.1810	0.8457	1.9618	240.3933	12.0453	38.1734	50.3405	0.3144
12/10/2012	96.4229	0.6345	0.1849	0.8216	2.1034	237.3081	12.9575	38.1962	50.3708	0.2770
13/10/2012	96.2190	0.6384	0.1826	0.8428	2.0726	234.2680	12.7048	38.1746	50.3684	0.2770
14/10/2012	96.5868	0.6191	0.1804	0.8088	1.9942	233.3765	11.2964	38.1666	50.3564	0.3069
15/10/2012	96.5393	0.5751	0.1878	0.7751	2.0031	228.9191	12.5476	38.2019	50.3920	0.0150
16/10/2012	96.4627	0.5597	0.1735	0.7390	2.0885	229.6926	13.8146	38.1668	50.3527	0.3893
17/10/2012	96.4839	0.5975	0.1758	0.7893	2.0556	231.5043	12.5577	38.1386	50.3107	0.3069
18/10/2012	96.4860	0.6430	0.1685	0.8139	1.9897	234.1065	13.6881	38.1981	50.3882	0.4866
19/10/2012	96.5275	0.5074	0.1675	0.6906	1.6940	231.8344	13.5642	38.0516	50.2309	0.0150
20/10/2012	96.6132	0.6512	0.1831	0.8440	1.7392	226.0943	13.1531	38.0587	50.2816	0.6812
21/10/2012	96.7784	0.5447	0.1704	0.7250	1.8111	231.1510	15.0210	38.0784	50.2013	0.6138
22/10/2012	96.4600	0.5406	0.1805	0.7232	1.8671	227.3336	13.4095	38.1675	50.3953	0.0150
23/10/2012	95.9158	0.6125	0.1779	0.7985	2.1012	237.6941	13.9681	38.2368	50.4285	0.5390
24/10/2012	96.4958	0.5707	0.1834	0.7713	1.9683	228.7359	12.7897	38.1721	50.3488	0.0150
25/10/2012	96.4958	0.5707	0.1834	0.7713	1.9683	228.7359	12.7897	38.1721	50.3488	0.0150
26/10/2012	96.4019	0.5625	0.1723	0.7399	2.0800	219.9682	12.5842	38.2492	50.4688	0.0150
27/10/2012	93.6541	0.5924	0.1731	0.7683	2.1598	217.0538	12.8358	38.2346	50.4451	0.0075
28/10/2012	95.2292	0.4590	0.1709	0.6311	1.5717	226.6679	10.8432	38.0697	50.4297	0.0075
29/10/2012	96.2828	0.4576	0.1652	0.6332	1.5004	213.1426	8.6046	37.9941	50.2431	0.0075
30/10/2012	96.5662	0.3934	0.1556	0.5670	1.1578	204.3147	3.3609	37.9768	50.3343	0.0075
31/10/2012	96.8673	0.4603	0.1704	0.6336	1.3938	225.2660	9.2659	38.0212	50.3971	0.0075
Mínimo	93.6541	0.3934	0.0083	0.5670	1.1578	204.3147	3.3609	37.9768	50.1528	0.0075

Observaciones:

